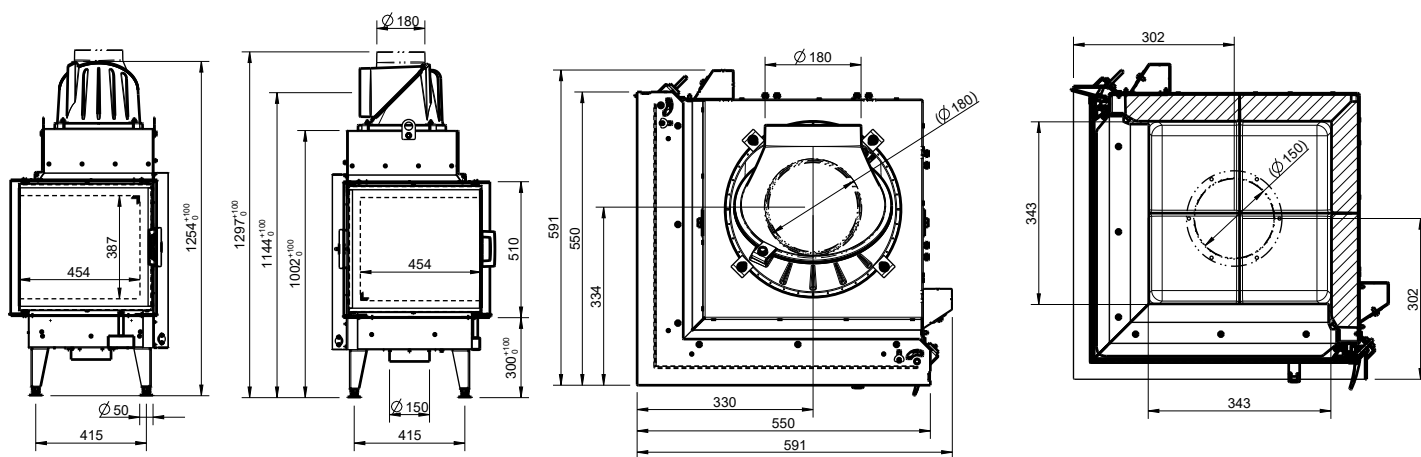


# 55X55X51-K-3.0



1:10

[www.austroflamm.com](http://www.austroflamm.com)

Dimensions and weight	
Height from [mm]	1299
Height to [mm]	1419
Width (body installation dimension) [mm]	591
Depth [mm]	591
Door frame height [mm]	510
Door frame width [mm]	550
Weight, basic appliance [kg]	124
Weight, HMS [kg]	49
Combustion chamber height [mm]	437
Combustion chamber width [mm]	343
Combustion chamber depth [mm]	343
Flue pipe outlet, diameter [mm]	180
Minimum distance to combustible materials - distance to rear dR [mm]	0
Minimum distance to combustible materials - left side dS_1 [mm]	0
Minimum distance to combustible materials - right side dS_2 [mm]	0
Minimum distance to adjacent combustible materials (e.g. furniture) dP [mm]	800
Minimum distance to combustible materials - floor in front dF [mm]	830
Minimum distance to combustible materials - bottom dB [mm]	0
Minimum distance to combustible materials - left side radiation area dL_1 [mm]	450
Minimum distance to combustible materials - right side radiation area dL_2 [mm]	450
Minimum distance to combustible materials - distance to ceiling dC [mm]	750
Safety distance to insulation, ceiling [mm]	-
Safety distance to insulation, left [mm]	-
Safety distance to insulation, rear [mm]	60
Safety distance to insulation, right [mm]	60
Safety distance to insulation, floor [mm]	0
Insulation material thickness to installation base [mm]	0
Insulation material thickness to ceiling [mm]	-
Minimum distance from non-flammable materials [mm]	50
Insulation material, left [mm]	100
Insulation material thickness, right [mm]	100
Insulation material, rear [mm]	100
Cross-section, convection outlet [cm <sup>2</sup> ]	700
Cross-section, convection inlet [cm <sup>2</sup> ]	700
Max. amount of firewood fuel to be deposited [kg]	3.7
Output	
Nominal heat efficiency [kW]	11.3
Minimum heat output [kW]	-
Maximum heat output [kW]	11.3
Energy efficiency class	A
Circulating air cross-section with metal heat recovery surface [cm <sup>2</sup> ]	700
Circulating air cross-section without metal heat recovery surface [cm <sup>2</sup> ]	700
Combustion air requirement [m <sup>3</sup> /h]	11.5
Minimum fuel throughput [kg/h]	-
Maximum fuel throughput [kg/h]	-
Outside air connection diameter [Ø mm]	150
Equipment	
Hinged door	Yes
Sliding door	No

- not available

**Equipment**

Double pane	No
Pane curvature	Flat
Opening mechanism	Folding
Balanced flue - DiBt (German Institute for Structural Engineering)	Yes
Heat Memory System	Accessories
Hypocaust in compliance with technical regulations	Yes

**Data for the chimney sweep**

Flue gas mass flow at nominal heat output [g/s]	7.5
Flue gas temperature [°C]	295
Minimum delivery pressure at nominal heat output [Pa]	12